

**WOMEN'S
AND GIRLS'
EMERGENCY
CENTRE**



L'ABODE
ACCOMMODATION
SPECIALISTS



**WE CREATE
SAFE FUTURES
FOR WOMEN
AND CHILDREN**





OUR PURPOSE:

**TO BUILD A COMMUNITY
FREE FROM GENDER BASED
VIOLENCE**

**BY HARNESSING COLLECTIVE
POWER AND SHAPING A SAFER
FUTURE FOR GENERATIONS TO
COME.**



THE NUMBERS DEMAND URGENCY



101

women were recorded to be **murdered in 2024**, this is a 29% increase from 2023

Source: Destroy the Joint, Counting Dead Women.



EVERY
FOUR DAYS

a **woman is murdered** in Australia

Source: Destroy the Joint, Counting Dead Women.



LEADING DRIVER
OF HOMELESSNESS

for women in Australia is **domestic and family violence**

Source: Personal Safety Survey, 2022 (ABS)



1 IN 4

DV-related murder victims in 2024 were **children**, UP FROM 1 in 10 in 2023.

NSW Bureau of Crime Statistics and Research, 2025



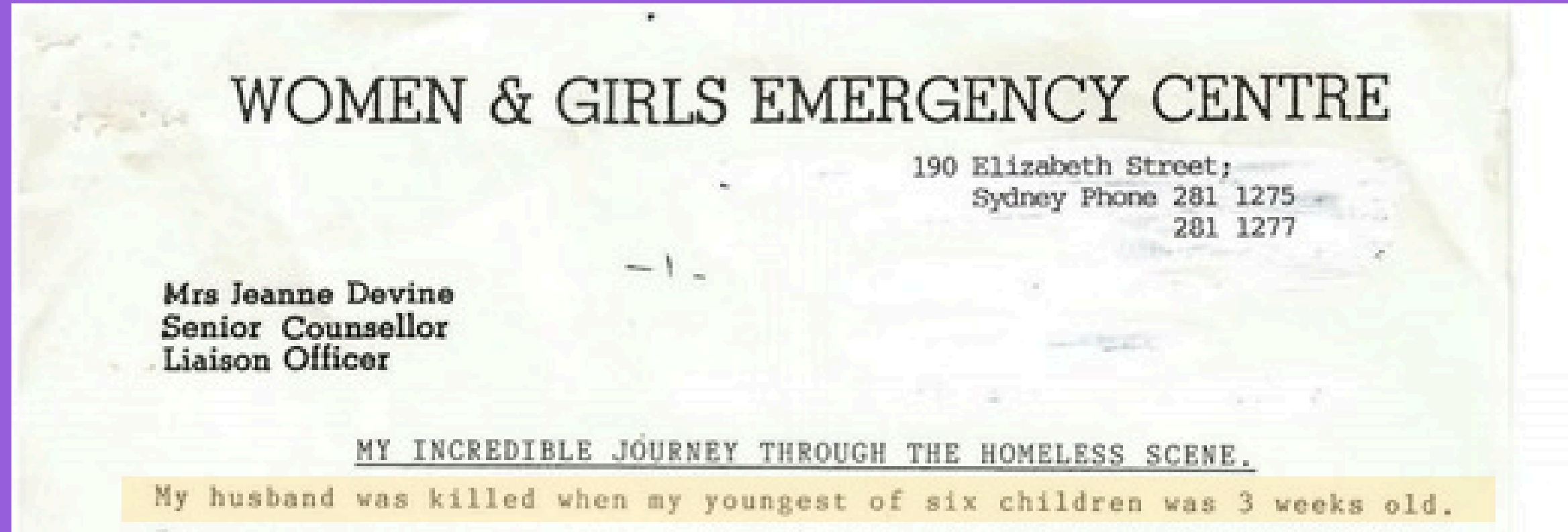
“At WAGEC it is hard to think about a ‘beginning’ to this crisis because it seems to always be with us. Crisis was the genesis of our organisation, and **we’ve been responding to it every day since.**”

NICOLE YADE
WAGEC CHIEF EXECUTIVE OFFICER





WAGEC WAS ESTABLISHED BY A WOMAN WHO WAS IN CRISIS HERSELF, JEANNIE DEVINE



I told them this is a war on homelessness and poverty.

Through the doors came all women



2 IN 5

women have experienced violence since the age of 15.





This means 2 in 5 women in your:
Workplace, friendship groups, and wider communities
have experienced some form of violence from an intimate partner.





**ANYONE OF US
CAN EXPERIENCE
DOMESTIC VIOLENCE AND
HOMELESSNESS**



FROM CRISIS TO INDEPENDENCE

PROVIDING SUPPORT TO WOMEN AND CHILDREN ACROSS EVERY STAGE – FROM IMMEDIATE CRISIS TO HEALING, RECOVERY, AND BEYOND.

WAGEC HAS 11 SITES, INCLUDING:



Redfern

WAGEC's headquarters is the central hub for Fundraising, Community, Prevention, Programs and People & Culture - and a dedicated space for community learning, training and collaboration.



Jeannie's Refuge

Our largest accommodation site, Jeannie's accommodates up to **15 families** at a time, ranging from pregnant women to mothers with five children.



Holly's Refuge

Holly House is the smallest of the accommodation sites, with the capacity to accommodate **6 families ranging** from pregnant women to women with 5 children.



From Now Refuge

From Now is our accommodation site that supports up to **five women** and their families exiting prison to access safe and stable accommodation.



Helping Children Heal Hub

HCH supports children recovering from DFV through trauma-informed programs in our refuges and outreach hub.



OUR PROGRAMS

EACH NIGHT

200

WOMEN AND CHILDREN
WHO NEED A SAFE PLACE
TO STAY ARE LIVING IN
OUR ACCOMMODATION

HOMELESSNESS PROGRAM

We support people in crisis and help them transition into safe, stable futures.

Includes:

- **Assess and Connect:** A key entry point into the Specialist Homelessness Services system, providing triage, intake, assessment, and referral for women and children seeking crisis support
- **Crisis and Transitional Housing:** Safe, trauma-informed accommodation across WAGEC-managed sites
- **Onsite Case Management:** Support with safety planning, legal and health referrals, housing applications, and family support
- **Referral Pathways:** Strong partnerships with wraparound services to support long-term stability

Over 200 women and children across four
refuge sites supported with safe accommodation





OUR PROGRAMS



ACCESS PROGRAM

ACCESS is a 1:1 volunteer mentoring program that has **supported over 500 women and non-binary people** to gain confidence, set goals and work towards financial independence.

1 in 3 ACCESS Mentees go on to engage in education or employment opportunities



HELPING CHILDREN HEAL

Helping Children Heal is program that has provided specialised **support to over 104 children and young people impacted by violence and homelessness**, helping them to heal, recover and thrive.

40% of WAGEC's clients are young people aged 0 – 17



OUR PROGRAMS



FROM NOW PROGRAM

From Now is our accommodation site that supports up to **five women and their families exiting prison** to access safe and stable accommodation.

In 2023-2024, 94 women received support through the From Now program to take their next steps after prison



ALL IN

All In **supports early years education professionals** and families with free workshops and resources on how to model respect, safety, and equality for the next generation.

After attending the workshops, 91% of educators were confident in challenging gender stereotypes



OUR PROGRAMS



TECH SAFETY AND PREVENTION PROGRAM

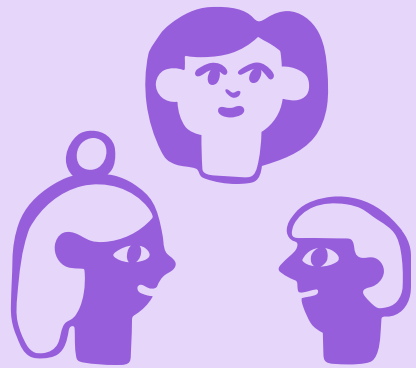
The Tech Safety and Prevention program is a pilot project working with clients and frontline workers to provide advice, training and referrals for technology-facilitated abuse support.

The team bridges critical tech skills gaps by delivering survivor-centred education, building staff confidence to navigate digital safety in domestic and family violence contexts, and creating practical tools and resources for WAGEC and the broader sector and community.

**42% of cases of coercive control
involve tech facilitated abuse.**



OUR IMPACT



2252

**Women and children
were supported** across
all of WAGEC's services



61,494

Bed nights provided*

*Bed nights are the total number
of sleeps WAGEC accommodated
over the year.



136

136 children and **81**
parents supported
through **HCH program**



132

Mentoring
relationships
supported by the
Access Program



WHY WE DO THIS: ADAM AND ZAYNE'S STORY

Five-year-old Adam, his brother Zayne, and their mother escaped their violent home with just a few belongings, seeking safety at a WAGEC refuge after enduring escalating abuse from Adam's father.

At the refuge, the traumatised boys initially responded with aggression and silence, **communicating only through dark, scribbly drawings.** The WAGEC Helping Children Heal team worked patiently with them while their mother received counselling and support services.

Gradually, the family healed—**the boys' drawings brightened,** their mother regained her confidence, and they reconnected with each other. By summer, they moved into their own transitional home, **carrying their drawings as symbols of their journey,** with Adam finally feeling safe enough to be a child again.





WE EQUALLY AIM
TO ADDRESS THE
UNDERLYING CAUSES
OF GENDER-BASED
VIOLENCE



INTERNATIONAL
WOMENS
DAY .





BREAKING DOWN WAGEC'S WORK

CRISIS & POST CRISIS

Responding to violence after it has occurred, including healing and recovery



EARLY INTERVENTION

Changing the path for people who are at higher risk of experiencing or using violence



PRIMARY PREVENTION

Addressing the underlying drivers of gender-based violence





OUR APPROACH TO PRIMARY PREVENTION

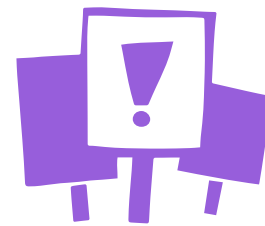
We have a unique position here at WAGEC, where we approach gender-based violence from all levels —from on the ground support, to community advocacy. This frontline work informs our work with our wider community, keeping it evidence based and trauma informed.

To break down our prevention work:



EDUCATION

Working with businesses, governments & community leaders to **build understanding about the causes of gender-based violence.**



AWARENESS

Teaching communities to **identify violence**, learn active techniques for **safe intervention** and promote **respectful relationships.**



ADVOCACY

Promoting **women's financial independence & housing security**, and advocating for gender equality at **systemic & structural levels.**



**IT TAKES ALL OF US,
TO END GENDER-
BASED VIOLENCE**





THIS IS WHY WE NEED YOUR HELP

Because change doesn't come from one voice —
it comes from many.

Because silence enables violence.

Because when the media, community, and
individuals speak up together, change becomes
not just possible — but inevitable.



THE POWER OF COMMUNITY



DONATE



SHOW UP



SPEAK OUT



VOLUNTEER



WHAT A PARTNERSHIP COULD LOOK LIKE



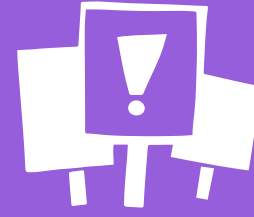
FRIEND

Become a supporter of WAGEC's mission by contributing at an entry level to make a tangible difference. This tier allows businesses to engage their staff in meaningful volunteering, working bees, and awareness initiatives while directly supporting frontline services and mentorship programs.

Impact Measurement:

- Workforce engagement through volunteering and material donation drives.
- Introduction to "train the team" series and understanding of GBV.
- Helps fund major programs

UP TO \$49k



ALLY

Elevate your business's commitment to addressing GBV by becoming an Ally. This tier offers structured training, ensuring that businesses play an active role in addressing the root causes of GBV. Companies will have access to education-focused initiatives, including lunch and learn sessions, tailored C-suite training, and workplace programs.

Impact Measurement:

- Increased staff awareness and understanding of GBV
- Implementation of workplace initiatives that drive action and cultural change
- Personalised workforce, HR and policy support on DFV responses

\$50-\$79k



PARTNER

Take a leadership role in corporate social responsibility and make a transformational impact. As a Partner, your business will gain exclusive branding opportunities, strategic collaboration with WAGEC, and priority involvement in high-profile campaigns, training and events while funding critical services for women and children.

Impact Measurement:

- Supports women in long-term housing and recovery programs
- Trains mentees and expands employment pathway initiatives
- Exclusive branding opportunities in WAGEC campaigns and high-profile events

\$80-100k+



PARTNER WITH WAGEC

Drive Social Impact and Strengthen Your Business



Build Meaningful Customer Connections

Customers value brands with purpose—

3 in 5 Australians

think more of companies that support worthy causes. Partnering with WAGEC shows your commitment to gender equality and social change, strengthening your brand and deepening customer loyalty.



Maximise Impact and Business Value

All donations to WAGEC are **tax-deductible** and contribute to your **Corporate Social Responsibility** goals. Our partnerships help businesses enhance their sustainability reporting, meet **ESG objectives**, and forge deeper connections with like-minded companies.



Engage Employees and Enhance Workplace Culture

Employees want to work for companies that make a difference. Supporting WAGEC shows your team you **value fairness** and **positive change**, boosting morale and fostering a culture of generosity.



PARTNER WITH WAGEC

Drive Social Impact and Strengthen Your Business



Join a Community of Changemakers

We believe in lasting change, not quick fixes. Your support provides safe housing, case management, and essential services that **break the cycle of violence**. Our goal is to **end gender-based violence within a generation**, making your impact far greater than a donation.



Experience the Impact Firsthand

When you give locally, you see **real, measurable change**. WAGEC ensures close collaboration with our corporate partners, providing **transparency on how funds are used**.



Hands-On Employee Engagement

We offer **impactful workplace training** for your employees—aligned with your corporate values. These experiences deepen staff engagement, equip staff with the skills and knowledge to take action towards gender equality and reinforce your company's commitment to meaningful social impact.



JOIN THE PARTNERSHIP LINEUP



Hanes Group

Supports WAGEC's ACCESS Program by providing employment readiness and pathway opportunities for women.



Bras N Things (BNT)

Provides educational training for staff on gender-based violence awareness. Marketing partnership to promote WAGEC's work and campaigns.



Stella Insurance

Long-term partnership, donating 5% of every car insurance policy sold to support WAGEC's frontline services.



Pepper Money

Matching partnership up to \$80,000 annually. Additional staff engagement and participation in Walk for WAGEC, contributing up to \$60,000 per year.



Epoch Capital

Direct program funding through the JHCH initiative, supporting WAGEC's critical programs. Supports WAGEC's Helping Children Heal Program.



Westpac

Supports Walk for WAGEC and the ACCESS Mentoring Program. Largest mentor referrer for the ACCESS Mentoring Program.



Arc Capital Group

Supports Walk for WAGEC as matching partner of \$50,000. Supporting WAGEC's frontline services and crisis response programs.



**“THAT FIRST NIGHT,
I FINALLY FELT I COULD
SLEEP. MY CHILDREN
DIDN'T HAVE TO BE
AFRAID ANYMORE”**

—WAGEC CLIENT



WITH YOUR SUPPORT

WE CAN END VIOLENCE AGAINST WOMEN AND CHILDREN

**WOMEN'S
AND GIRLS'
EMERGENCY
CENTRE**

Laura Chatman

Donor and Partnerships Coordinator

laura.chatman@wagec.org.au

Phone: 0400 927 726